

Deye Cloud App Quick Guide

NINGBO DEYE ESS TECHNOLOGY Co., LTD

Add: 6F No.8 building, No.568 Rixian South Road, Cixi Binhai Economic

Development Zone, Zhejiang

E-mail: info@deye.com.cn



Using the APP

1. You can control and monitor the product through the Deye Cloud App.
Download the Deye Cloud App by scanning the QR code.
2. This document is subject to modifications, updates, revisions,
or termination without prior notice.
Scan the QR code to access to the latest operation instructions for the APP.



App



Manual

STEP 1: Login

On the login page, you can choose to log in with email, phone number, or username.

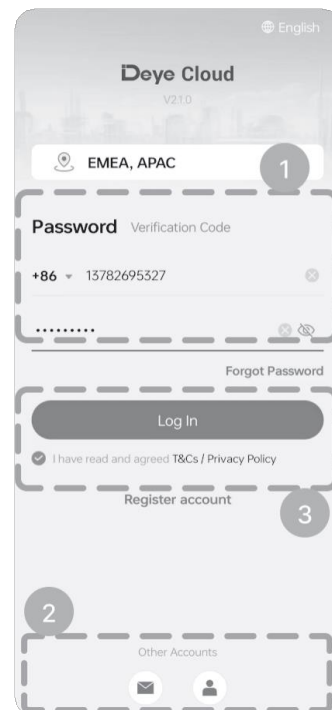
Enter the corresponding account information and click “Login”.

Note: Only accounts registered with usernames in the old version support logging in with usernames.

1. Phone number login-log in with password or verification code.
2. Click on the icon at the bottom of the page to switch to email login or username login.
3. Check [I have read and agreed to the Service Agreement/ Privacy Policy] and click [Login].

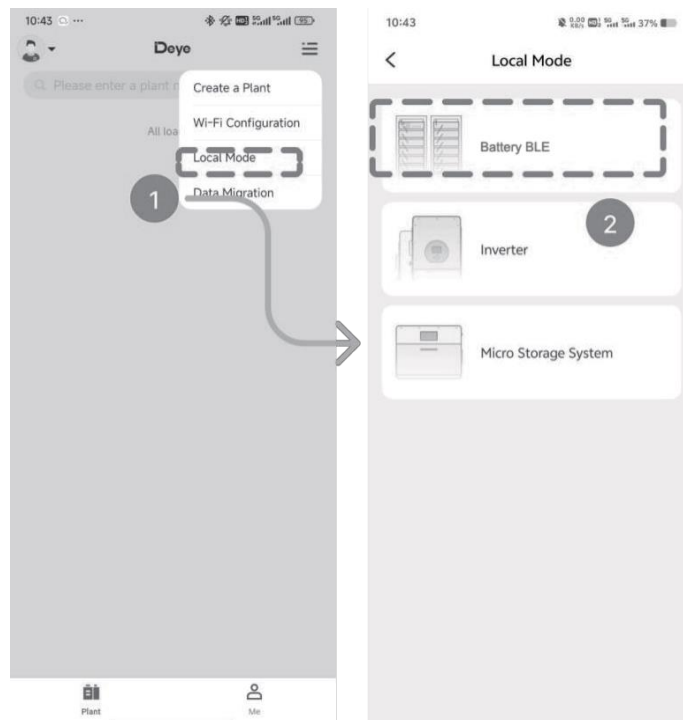
Important!

As your device shares identical operational procedures with the SE-F5 in the Deye Cloud App, we will use the SE-F5 as an example to demonstrate how to operate your app.



STEP 2: Local Mode

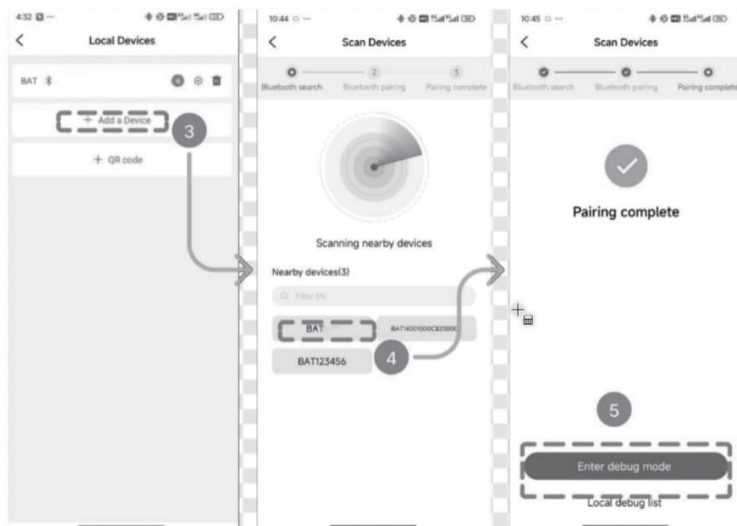
1. Click on the top right corner of the HOME page and select [Local Mode];
2. Select the device type [Battery BLE], which refers to batteries with Bluetooth function.



STEP 3: Add a Device

Click the [Add a Device]. You can add a device via the Bluetooth, scanning the QR code or entering the SN code manually.

Method 1: When using the Bluetooth mode, you need to select the [BAT]. After the “Pairing complete” shows up, click the [Enter debug mode] to view your data.



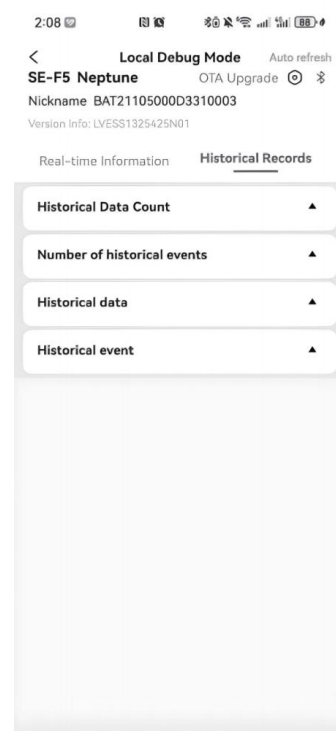
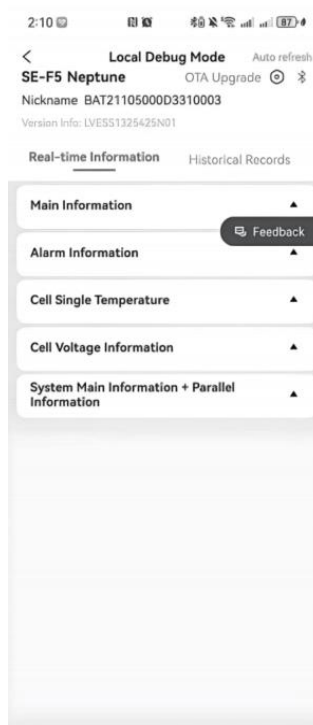
STEP 3: Add a Device

Method 2: Besides using the Bluetooth mode, adding the SN also supports scanning the QR code or entering the SN code manually.



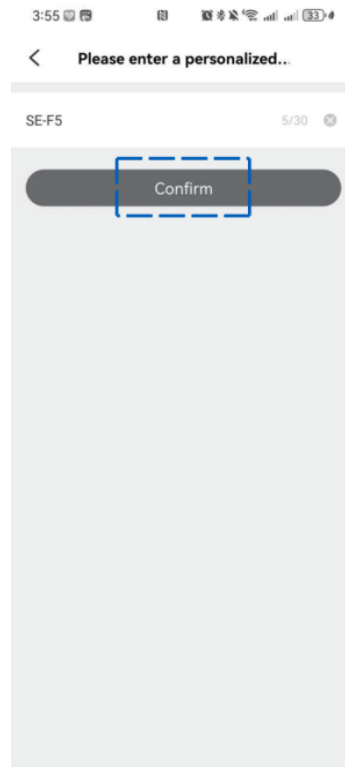
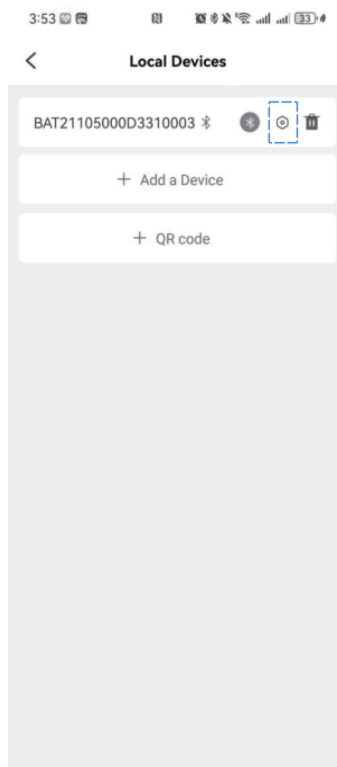
STEP 4: Local Debug Mode

Detailed information of your batteries can be acquired in the Local Debug Mode, including real-time information and historical records.



How to personalize your product name?

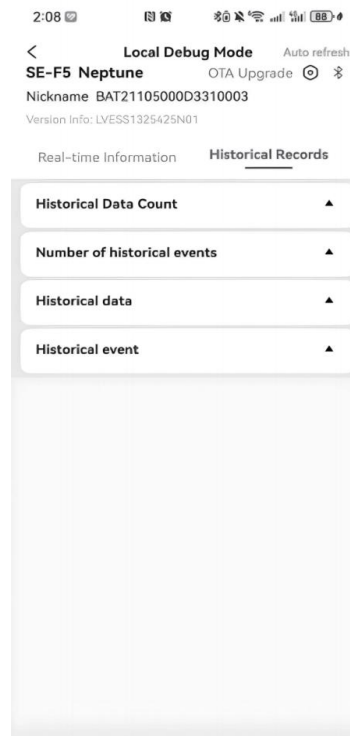
1. Click on the top right corner to edit the nickname.
2. Enter a new name, click [Confirm], and then the changed name will be displayed on the interface.



How to upgrade your firmware?

STEP 1: OTA Upgrade

Click [OTA Upgrade] to view the latest firmware upgrade package.



STEP 2: OTA Bin File

There are two approaches to get OTA bin file:

Method 1: Selecting from file;

Method 2: Downloading from network.

When the method 1 is choosed, you are supposed to ask the service center for the latest firmware upgrade package.

During the upgrade, all indicators will flash. Avoid exiting the current interface until the update completes.

Upon reaching 100%, your device will restart automatically.

