



# RESIDENTIAL ESS SOLUTION

## GB-L Plus

### Intelligent Management & Easy O&M

- **Pack + Cell Dual-Level Online Self-Balancing Technology**, expansion and battery replacement require no pre-configuration
- **Deye BMS+EMS** integrated control for real-time performance optimization
- **Bluetooth & Deye Cloud**, 24/7 monitoring & diagnostics

### Superior Performance & Ultimate Safety

- **75A** Continuous Output, perfectly matched with Deye **10~50kW** HV inverters
- **IP66** protection, Stable Operation from **-20°C to 55°C**
- Cluster Temperature Difference **< 8°C**, ensuring longer battery cycle life
- **Pack-Level Pressure & Fire Protection, Cell & Connection Over-Temperature Protection**

### High Integration & Easy Expansion

- Built on a **modular architecture**, with a cable-free stacking design
- **Higher energy density** maximizes vertical space utilization
- Each cluster delivers **11.52~69.12kWh** for residential & small C&I applications

**New HV**  
ESS

**10-Year**  
Warranty

**≥6000**  
Cycle Life

# Technical Data

Model	GB-L11 Plus	GB-L17 Plus	GB-L23 Plus	GB-L28 Plus	GB-L34 Plus	GB-L40 Plus
<b>Main parameter</b>						
Cell Chemistry	LiFePO4					
Module model	GB-L Plus-Pack5.7-2-A7					
Module Energy (kWh)	5.76					
Module Norminal Voltage (V)	57.6					
Module Capacity (Ah)	100					
Battery Module Qty In Series (Optional)	2	3	4	5	6	7
System Nominal Voltage ( V )	115.2	172.8	230.4	288.0	345.6	403.2
System Operating Voltage ( V )	90~131.4	135~197.1	180~262.8	225~328.5	270~394.2	315~459.9
System Normal Energy (kWh)	11.52	17.28	23.04	28.8	34.56	40.32
Charge Current (A) <sup>[1]</sup>	Max.Continuous					
	75					
Discharge Current (A) <sup>[1]</sup>	Peak					
	135(15s)					
Discharge Current (A) <sup>[1]</sup>	Max.Continuous					
	75					
Discharge Current (A) <sup>[1]</sup>	Peak					
	135(2min)					
<b>Other Parameter</b>						
Depth of Discharge	Max.100%, Recommended 90%, Adjustable					
Dimension ( W × D × H ) (mm)	610x385x447	610x385x587	610x385x727	610x385x867	610x385x1007	610x385x1147
Weight Approximate (kg)	130	180	230	280	330	380
Display	Battery module: LED, PDU module: LCD					
Communication Port	CAN2.0, RS485, Bluetooth					
Cycle Life <sup>[2]</sup>	≥6000					
Working Temperature ( °C )	Charge					
	0~ 55 ( -20~55 optional heating)					
Working Temperature ( °C )	Discharge					
	-20 ~ 55					
Warranty <sup>[3]</sup>	10 years					
Storage Temperature ( °C )	0 ~ 35					
Fire Protection	Aerosol, Explosion venting					
Humidity	5%~95% RH,Non-Condensing					
Altitude (m)	≤3000					
IP Rating of Enclosure	IP66					
Scalability	Max.16 Modules in parallel					
Instalaton Location	Floor Mount					
Type of Cooling	Natural Cooling					
Certification	IEC 62619/IEC 62040/VDE 2510-50/CEC/UN38.3					

1. The current is affected by temperature and SOC.

2. 25°C±2°C, 0.5C, 90%DOD, 70%EOL.

3. The warranty is due whichever reached first of warranty period or life cycle power.

# Technical Data

Model	GB-L46 Plus	GB-L51 Plus	GB-L57 Plus	GB-L63 Plus	GB-L69 Plus
<b>Main parameter</b>					
Cell Chemistry	LiFePO4				
Module model	GB-L Plus-Pack5.7-2-A7				
Module Energy (kWh)	5.76				
Module Norminal Voltage (V)	57.6				
Module Capacity (Ah)	100				
Battery Module Qty In Series (Optional)	8	9	10	11	12
System Nominal Voltage ( V )	460.8	518.4	576	633.6	691.2
System Operating Voltage ( V )	360~525.6	405~591.3	450~657	495~722.7	540~788.4
System Normal Energy (kWh)	46.08	51.84	57.6	63.36	69.12
Charge Current (A) <sup>[1]</sup>	Max.Continuous	75			
	Peak	135(15s)			
Disharge Current (A) <sup>[1]</sup>	Max.Continuous	75			
	Peak	135(2min)			
<b>Other Parameter</b>					
Depth of Discharge	Max.100%, Recommended 90%, Adjustable				
Dimension ( W × D × H ) (mm)	610x385x1287	610x385x1427	610x385x1567	610x385x1707	610x385x1847
Weight Approximate (kg)	430	480	530	580	630
Display	Battery module: LED, PDU module: LCD				
Communication Port	CAN2.0, RS485, Bluetooth				
Cycle Life <sup>[2]</sup>	≥6000				
Working Temperature ( °C )	Charge	0~ 55 ( -20~55 optional heating)			
	Discharge	-20 ~ 55			
Warranty <sup>[3]</sup>	10 years				
Storage Temperature ( °C )	0 ~ 35				
Fire Protection	Aerosol, Explosion venting				
Humidity	5%~95% RH,Non-Condensing				
Altitude (m)	≤3000				
IP Rating of Enclosure	IP66				
Scalability	Max.16 Modules in parallel				
Instalaton Location	Floor Mount				
Type of Cooling	Natural Cooling				
Certification	IEC 62619/IEC 62040/VDE 2510-50/CEC/UN38.3				

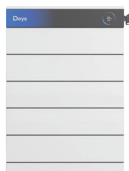
1. The current is affected by temperature and SOC.

2. 25°C±2°C, 0.5C, 90%DOD, 70%EOL.

3. The warranty is due whichever reached first of warranty period or life cycle power.

## HESS Solution (Recommend)

GB-L28 Plus



SUN-15K-SG02HP3-EU-DM2

GB-L40 Plus



SUN-20K-SG02HP3-EU-DM2

SUN-30K-SG02HP3-EU-AM3

GB-L51 Plus



SUN-25K-SG02HP3-EU-AM3

SUN-40K-SG02HP3-EU-BM4

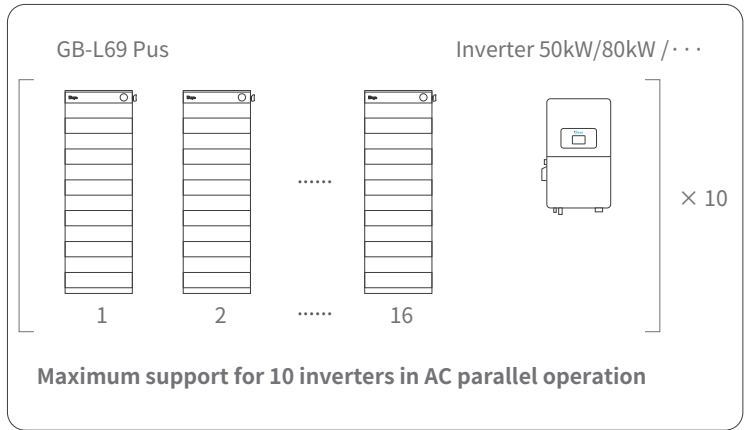
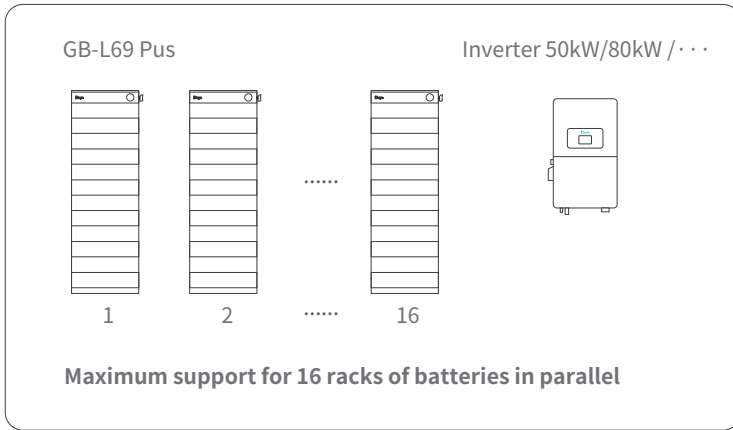
GB-L69 Plus



SUN-50K-SG02HP3-EU-BM4

Power Unit	Battery Model	Specification
<b>Standard Residential ESS</b>		
SUN-12K-SG02HP3-EU-DM2	GB-L23 Plus	12kW/23.04kWh
SUN-15K-SG02HP3-EU-DM2	GB-L28 Plus	15kW/28.8kWh
SUN-20K-SG02HP3-EU-DM2	GB-L40 Plus	20kW/40.32kWh
<b>Large Residential ESS</b>		
SUN-25K-SG02HP3-EU-AM3	GB-L34 Plus	25kW/34.56kWh
SUN-30K-SG02HP3-EU-AM3	GB-L40 Plus	30kW/40.32kWh
SUN-35K-SG02HP3-EU-BM3	GB-L51 Plus	35kW/51.84kWh
SUN-40K-SG02HP3-EU-BM4	GB-L57 Plus	40kW/57.6kWh
<b>Small C&amp;I</b>		
SUN-50K-SG02HP3-EU-BM4	GB-L69 Plus	50kW/69.12kWh
SUN-60K-SG02HP3-EU-EM6	GB-L40 Plus*2	60kW/80.64kWh
SUN-70K-SG02HP3-EU-EM6	GB-L51 Plus*2	70kW/103.68kWh
SUN-80K-SG02HP3-EU-EM6	GB-L57 Plus*2	80kW/115.2kWh
SUN-100K-SG02HP3-EU-EM10	GB-L69 Plus*2	100kW/138.24kWh

## Typical Application Scenarios



## System Components

### GB-L Plus-PDU-A

Operating Voltage (V)	100-800
Max Charge / Discharge Current (A)	75
Operating Temperature Range (°C)	-20~55
Ingress Protection	IP66
Dimension (W × D × H) (mm)	610x385x110
Weight Approximate (kg)	23

### High voltage battery cluster control box

Operating Voltage (V)	100-800
Max Charge / Discharge Current (A)	75
Operating Temperature Range (°C)	-20~55
Ingress Protection	IP66
Dimension (W × D × H) (mm)	610x385x110
Weight Approximate (kg)	23



### GB-L Plus-Pack5.7-2-A7

Battery Type	LiFePO4
Nominal Voltage (V)	57.6
Rated Capacity (Ah)	100
Rated Energy (kWh)	5.76
Max Charge/Discharge Current (A)	75
Charge Temperature (°C)	0~ 55 (-20~55 optional heating)
Discharge Temperature (°C)	-20 ~ 55
Storage Temperature (°C)	0 ~ 35
Ingress Protection	IP66
Dimension (W × D × H) (mm)	610x385x140
Weight Approximate (kg)	50

### 5.76 kWh battery module

Battery Type	LiFePO4
Nominal Voltage (V)	57.6
Rated Capacity (Ah)	100
Rated Energy (kWh)	5.76
Max Charge/Discharge Current (A)	75
Charge Temperature (°C)	0~ 55 (-20~55 optional heating)
Discharge Temperature (°C)	-20 ~ 55
Storage Temperature (°C)	0 ~ 35
Ingress Protection	IP66
Dimension (W × D × H) (mm)	610x385x140
Weight Approximate (kg)	50

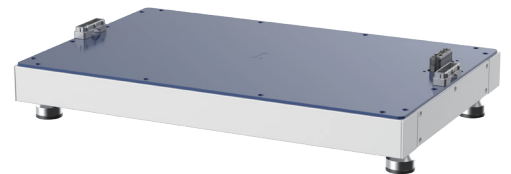


### GB-L Plus-Base-A

Dimension (W × D × H) (mm)	610x385x57
Weight Approximate (kg)	7

### Battery module base

Dimension (W × D × H) (mm)	610x385x57
Weight Approximate (kg)	7



# Deye APP

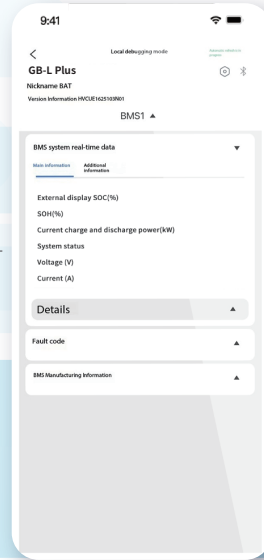
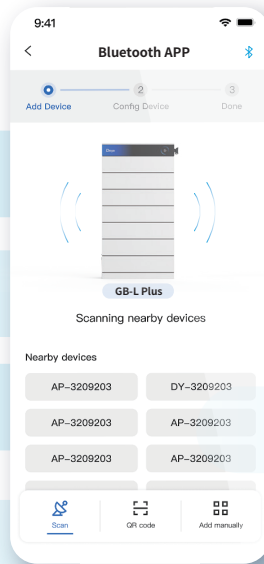
Bluetooth APP Monitoring

Low Power (Bluetooth LE)

Automated upgrade



Local monitoring mode for battery



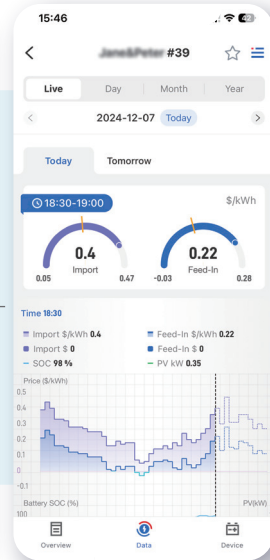
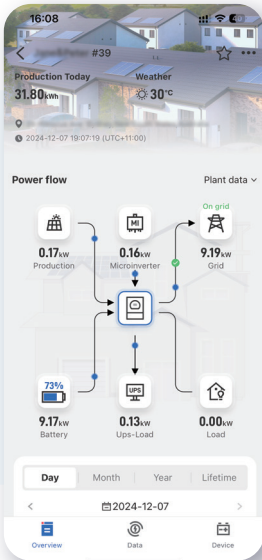
Quick Pairing

No Internet Needed

Portable Control



Remote monitoring mode for ESS(Inverter&Battery)



Real-time Equipment Monitoring

Intelligent Charging/Discharging Strategies

AI Data Analytics

Customized Maintenance

## Smarten Up Your Home Energy



Download Deye APP to join us!

Embrace a seamless, effortless energy experience that's both ecofriendly and budget-friendly with our intelligent assistant





**POWERING YOUR LIFE**



[www.deyeess.com](http://www.deyeess.com) / [www.deyeinverter.com](http://www.deyeinverter.com)



**Deye ESS / Deye New Energy**