



NEPT G RESIDENTIAL ESS SOLUTION

GB-L Ultra

Heating

Intelligent Management & Easy O&M

- **Pack + Cell Dual-Level Online Self-Balancing Technology**, expansion and battery replacement require no pre-configuration
- **Deye BMS+EMS** integrated control for real-time performance optimization
- **Bluetooth & Deye Cloud**, 24/7 monitoring & diagnostics

Superior Performance & Ultimate Safety

- **75A** Continuous Output, perfectly matched with Deye **10~50kW** HV inverters
- **IP66** protection, Stable Operation from **-20°C to 55°C**
- Cluster Temperature Difference **< 8°C**, ensuring longer battery cycle life
- **Pack-Level Pressure & Fire Protection, Cell & Connection Over-Temperature Protection**

High Integration & Easy Expansion

- Built on a **modular architecture**, with a cable-free stacking design
- **Higher energy density** maximizes vertical space utilization
- Each cluster delivers **11.52~69.12kWh** for residential & small C&I applications

New HV
ESS

10-Year
Warranty

≥6000
Cycle Life

Technical Data

Model	GB-L11 Ultra	GB-L17 Ultra	GB-L23 Ultra	GB-L28 Ultra	GB-L34 Ultra	GB-L40 Ultra	GB-L46 Ultra
Main parameter							
Cell Chemistry	LiFePO ₄						
Module model	GB-L-Pack5.76-H7						
Module Energy (kWh)	5.76						
Module Norminal Voltage (V)	57.6						
Module Capacity (Ah)	100						
Battery Module Qty In Series (Optional) ^[1]	2	3	4	5	6	7	8
System Nominal Voltage (V)	115.2	172.8	230.4	288.0	345.6	403.2	460.8
System Operating Voltage (V)	90~131.4	135~197.1	180~262.8	225~328.5	270~394.2	315~459.9	360~525.6
System Normal Energy (kWh)	11.52	17.28	23.04	28.8	34.56	40.32	46.08
Charge Current (A) ^[2]	Max.Continuous						
	Peak						
Discharge Current (A) ^[2]	Max.Continuous						
	Peak						
Other Parameter							
Depth of Discharge	Recommended 90%,Max. adjustable 100%						
Dimension (W × D × H) (mm)	610x385x457	610x385x597	610x385x737	610x385x877	610x385x1017	610x385x1157	610x385x1297
Weight Approximate (kg)	130	180	230	280	330	380	430
Display	LCD						
Communication Port	CAN2.0, RS485, Bluetooth						
Cycle Life ^[3]	≥6000						
Working Temperature (°C)	Charge						
	Discharge						
Warranty ^[4]	10 years						
Storage Temperature (°C)	0 ~ 35						
Fire Protection	Aerosol, Explosion venting						
Humidity	5%~95% RH,Non-Condensing						
Altitude (m)	≤3000						
IP Rating of Enclosure	IP66						
Scalability	Max.16 Modules in parallel						
Instalaton Location	Floor Mount						
Type of Cooling	Natural Cooling						
Certification	IEC 62619/IEC 62040/VDE 2510-50/CEC/UN38.3						

1. QTY2:Temporarily not supported for Deye inverters.
2. The current is affected by temperature and SOC.
3. 25°C±2°C, 0.5C, 90%DOD, 70%EOL.
4. Conditnions apply, refer to Deye Warranty Letter.

Technical Data

Model	GB-L51 Ultra	GB-L57 Ultra	GB-L63 Ultra	GB-L69 Ultra
Main parameter				
Cell Chemistry	LiFePO ₄			
Module model	GB-L-Pack5.76-H7			
Module Energy (kWh)	5.76			
Module Norminal Voltage (V)	57.6			
Module Capacity (Ah)	100			
Battery Module Qty In Series (Optional)	9	10	11	12
System Nominal Voltage (V)	518.4	576	633.6	691.2
System Operating Voltage (V)	405~591.3	450~657	495~722.7	540~788.4
System Normal Energy (kWh)	51.84	57.6	63.36	69.12
Charge Current (A) ^[1]	Max.Continuous	75		
	Peak	104(15s)		
Disharge Current (A) ^[1]	Max.Continuous	75		
	Peak	135(2min)		
Other Parameter				
Depth of Discharge	Recommended: 90%, Max adjustable: 100%			
Dimension (W × D × H) (mm)	610x385x1437	610x385x1577	610x385x1717	610x385x1857
Weight Approximate (kg)	480	530	580	630
Display	LCD			
Communication Port	CAN2.0, RS485, Bluetooth			
Cycle Life ^[2]	≥6000			
Working Temperature (°C)	Charge	-20~55 (Heating On)		
	Discharge	-20 ~ 55		
Warranty ^[3]	10 years			
Storage Temperature (°C)	0 ~ 35			
Fire Protection	Aerosol, Explosion venting			
Humidity	5%~95% RH,Non-Condensing			
Altitude (m)	≤3000			
IP Rating of Enclosure	IP66			
Scalability	Max.16 Modules in parallel			
Instalaton Location	Floor Mount			
Type of Cooling	Natural Cooling			
Certification	IEC 62619/IEC 62040/VDE 2510-50/CEC/UN38.3			













1. The current is affected by temperature and SOC.

2. 25°C±2°C, 0.5C, 90%DOD, 70%EOL.

3. Condintions apply , refer to Deye Warranty Letter.

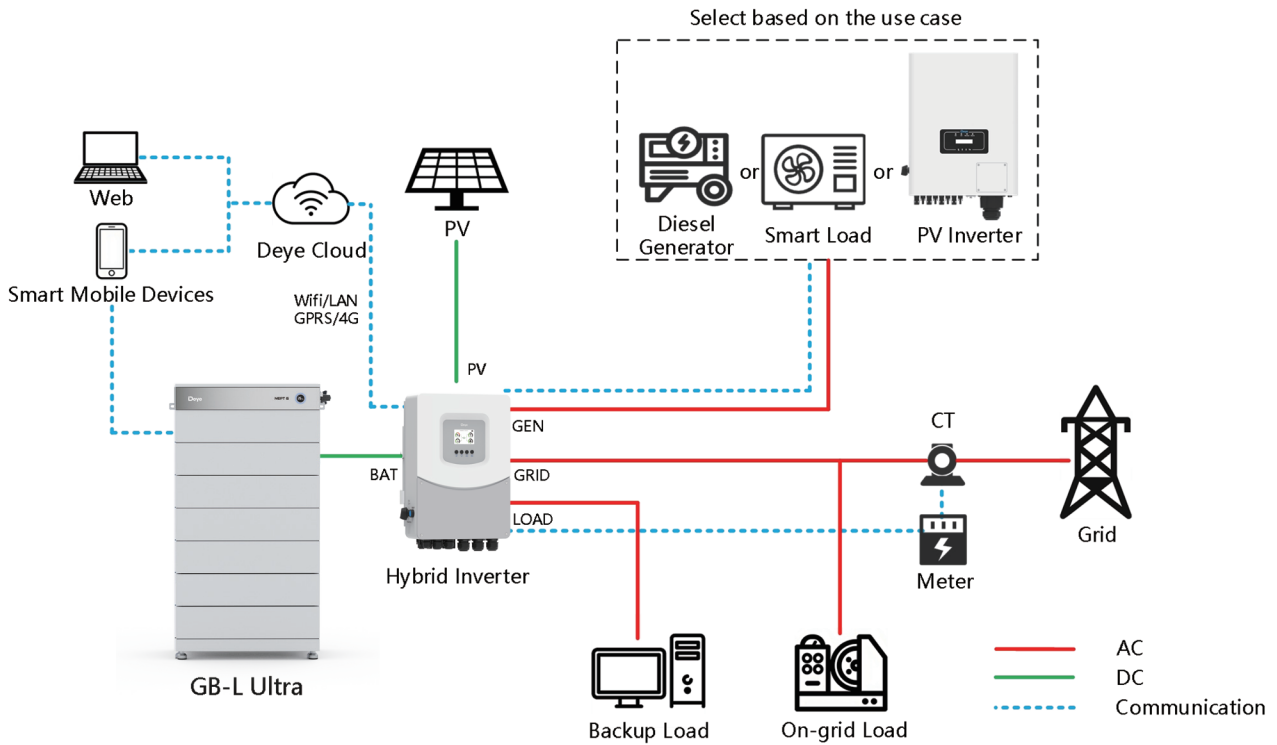
Three-Phase ESS Solution(Recommmend)

GB-L Ultra Series
Battery

					
GB-L17 Ultra	GB-L23 Ultra	GB-L28 Ultra	GB-L40 Ultra	GB-L51 Ultra	GB-L69 Ultra
+					
10kW(55A)	12kW(55A)	15kW(55A)	20kW(55A) 30kW(75A)	25kW(55A) 35kW(75A)	50kW(75A)
					

Power Unit	Battery Model	Specification
Standard Residential ESS		
SUN-10K-SG01HP3-EU-DM2	GB-L17 Ultra	10kW/17.28kWh
SUN-12K-SG01HP3-EU-DM2	GB-L23 Ultra	12kW/23.04kWh
SUN-15K-SG02HP3-EU-DM3	GB-L28 Ultra	15kW/28.8kWh
SUN-20K-SG02HP3-EU-DM3	GB-L40 Ultra	20kW/40.32kWh
Large Residential ESS		
SUN-25K-SG02HP3-EU-AM3	GB-L34 Ultra	25kW/34.56kWh
SUN-25K-SG02HP3-EU-DM3	GB-L51 Ultra	25kW/51.84kWh
SUN-30K-SG02HP3-EU-AM3	GB-L40 Ultra	30kW/40.32kWh
SUN-35K-SG02HP3-EU-BM3	GB-L51 Ultra	35kW/51.84kWh
SUN-40K-SG02HP3-EU-BM4	GB-L57 Ultra	40kW/57.6kWh
Small C&I		
SUN-50K-SG02HP3-EU-BM4	GB-L69 Ultra	50kW/69.12kWh
SUN-60K-SG02HP3-EU-EM6	GB-L40 Ultra*2	60kW/80.64kWh
SUN-70K-SG02HP3-EU-EM6	GB-L51 Ultra*2	70kW/103.68kWh
SUN-80K-SG02HP3-EU-EM6	GB-L57 Ultra*2	80kW/115.2kWh
SUN-100K-SG02HP3-EU-EM10	GB-L69 Ultra*2	100kW/138.24kWh

Typical Application Scenarios



System Components

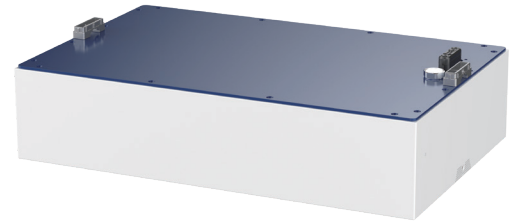
GB-L-PDU-H

Operating Voltage (V)	100~1000
Max Charge / Discharge Current (A)	75
Operating Temperature Range (°C)	-20~55
Ingress Protection	IP66
Dimension (W × D × H) (mm)	610x385x110
Weight Approximate (kg)	23



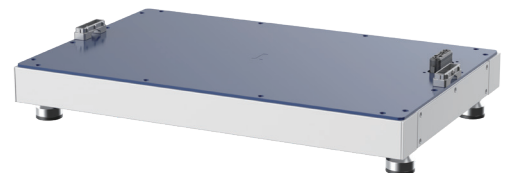
GB-L-Pack5.76-H7

Battery Type	LiFePO4
Nominal Voltage (V)	57.6
Rated Capacity (Ah)	100
Rated Energy (kWh)	5.76
Max Charge/Discharge Current (A)	75
Charge Temperature (°C)	-20~55 (Heating On)
Discharge Temperature (°C)	-20 ~ 55
Storage Temperature (°C)	0 ~ 35
Ingress Protection	IP66
Dimension (W × D × H) (mm)	610x385x140
Weight Approximate (kg)	50



GB-L-Base-A

Dimension (W × D × H) (mm)	610x385x57
Weight Approximate (kg)	7



Deye APP

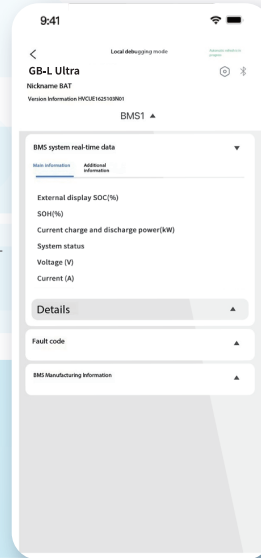
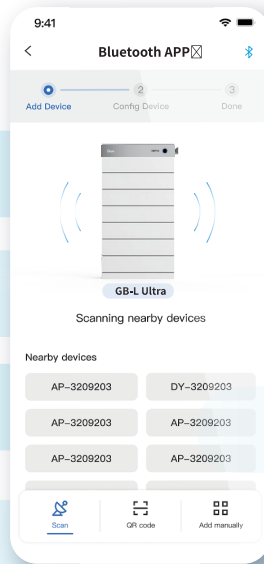
Bluetooth APP Monitoring

Low Power (Bluetooth LE)

Automated upgrade



Local monitoring mode for battery



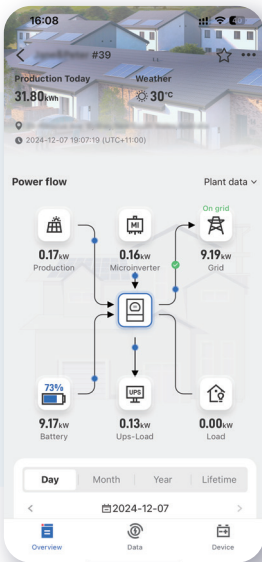
Quick Pairing

No Internet Needed

Portable Control



Remote monitoring mode for ESS(Inverter&Battery)



Real-time Equipment Monitoring

Intelligent Charging/Discharging Strategies

AI Data Analytics

Customized Maintenance

Smarten Up Your Home Energy



Download Deye APP to join us!

Embrace a seamless, effortless energy experience that's both ecofriendly and budget-friendly with our intelligent assistant





POWERING YOUR LIFE



www.deyeess.com / www.deyeinverter.com



Deye ESS / Deye New Energy